

BlueGreenHorizons

**Public space
swarm relocation**

More Control and Less Chaos

A 5 Part Series

BlueGreenHorizons

We performed 100's of recoveries a year.

We are licensed, insured, and have contacts with State, County and City Governments for relocating swarms and feral hives.

*Our main area of interest is feral Bee populations
and researching urban Bee/People conflict*

BlueGreenHorizons

*Public space
swarm relocation*

*Calm Cut-Outs
Successful Trap-Outs
Post Removal Care
DIY – Tools*

Coming Soon – My Journey with Varroa

BlueGreenHorizons

*Public space
swarm relocation*

Reproductive Swarming

- Natural
- Wonderful
- Exciting
- Is what Bee's do
- But !



In the beginning

The first two skills the beekeeper had to master were collecting Honey and catching the swarms & absconding that were the result of that.



Our responsibility

The three most common complaints causing increased regulation of Beekeeping are:

- *Swarming (Just plain scary)*
- *Pool Bees (Needing Water)*
- *Interference with ingress (Someone gets stung)*

Are you prepared?



Scions

Traps

Tools

Always Have a Backup Plan!

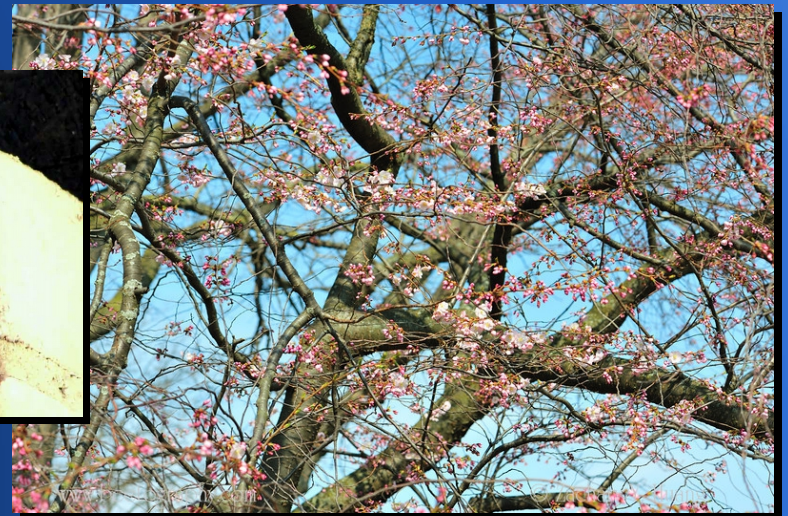


“If you can have a plan, have two”

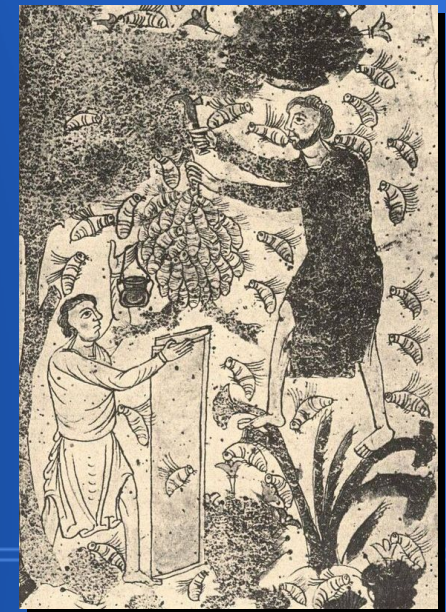
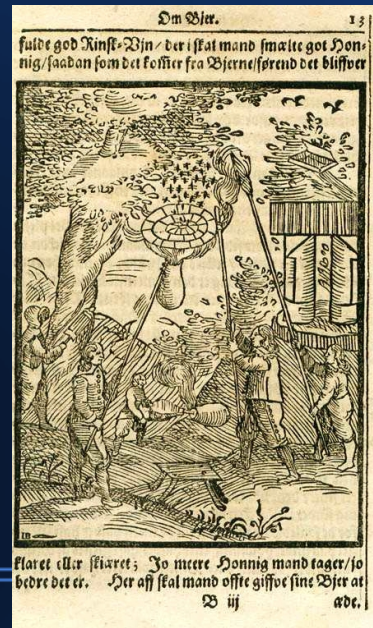
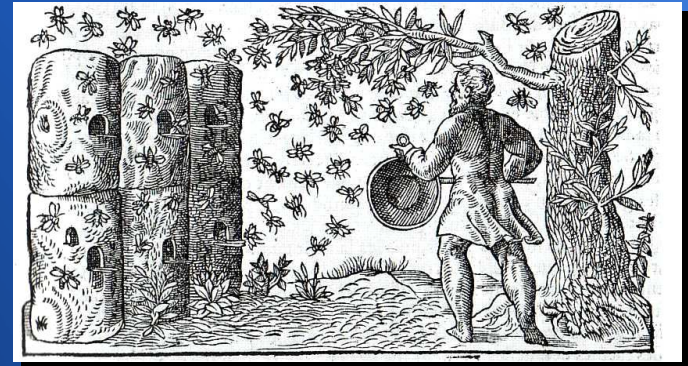
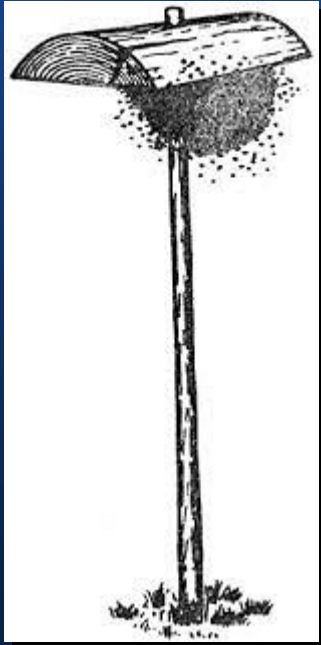
Swarms Land Everywhere



Not Swarms



How they did it



Many years ago

History tells of using a set of tools were first used to speed these recoveries.

Scions & Traps

Brood comb on a stick

Baskets (rubbed with bees wax)

& Tanging

Now we -



BGH - start at the Beginning

The **first** thing do was to deeply understand the historical information on swarm collecting (you know before YouTube).

The **second** was to review the currently available tools, materials and processes (you know YouTube)

The **third** was to put them together into a system that fits the Urban environment that we could repeat with confidence.

As a kid

My old methods did not fully address the Issues in the city.

Reach, Weight, Transportation, Flexibility – needed a single system.



Not so easy

Urban areas posed many interesting situations and the numbers were through the roof.

- Multiple calls per day
- Crowds of people
- Unique places and situations

Urban

When confronted with gathering several swarms in a single day along with the difficulties of Urban areas we decided to focus on solving those issues.

Bee issues - Quick, easy to use and retrieve as well as secure for transport.

People issues – Fear, public access, safety, - (plus we needed to look calm and professional to project confidence).

Prepare for People

Carry an FAQ or at least a business card .

We also handout Native Pollinator Information as well as a sheet with Links for children and also where to Donate to Local groups.

Our reality is we might have dozens of viewers!

Your Safety & Care

Gather Information !

Address any issues or concerns of the property owner before you start.

Are you prepared? Boxes - tools - first aid?

Watch out for others (kids, pets and observers).

Be aware of limbs, traffic and gravity (not to mention the Bees).

They are just Bee's – don't get hurt !

The Queen is the Key

The Queen spends over 99.5% of her life between brood comb, in the dark. Only under those conditions does she feel safe & secure – happy ? at least not unhappy!

"When Mom's Happy, Everyone's Happy"

How can we use this condition to our advantage?

Why Do So Much Planning?

- Owner's Personal and Property Safety
- Ease of Access and Reduced Effort
- Keep Time and Travel Costs Down
- Queen Capture
- Yours and the Bee's Safety!

Safety - Safety - Safety

The Gathering

So many ways!

Bag, box or whatever is handy

Move them to you or you to them

Work with Biology – don't fight it

Our system

Settle — (Throne as a scion and/or Tanging)

Place Throne for Walk in -
(Using Poles, Ladders, etc.)

Making it home — (Roof and Protection)

Collecting the Bees — (Time or Vacuum)

Queens Throne



A combination of all the effective techniques of the past with the materials of the Present.

Queens Throne

The Queen's Throne system is a:

Scion in a container

A Nuc box light enough to raise

A Bait box on a pole

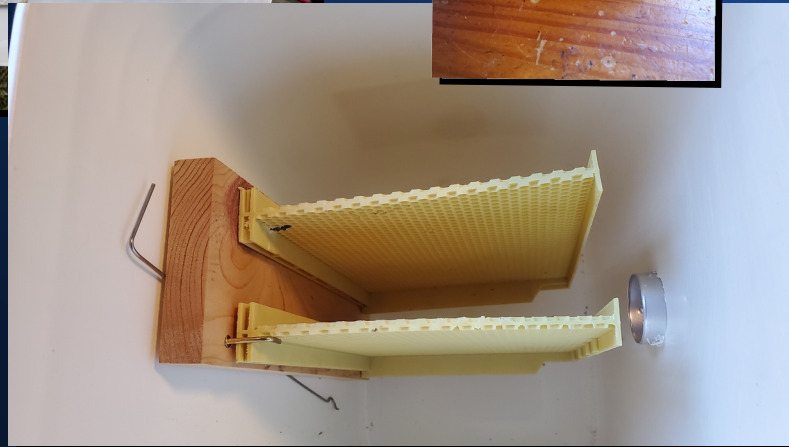
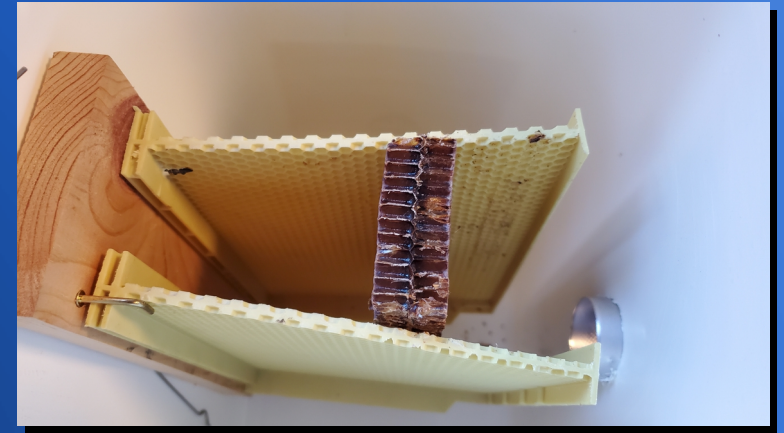
A Package like container

Cheap and easy to DIY

Queens Throne



Queens Throne



Queens Throne



Queens Throne



Reach



Place Throne for Walk in



Making it home

Remove from cluster location
(only shake if needed)

Put the Lid and Sun
protection on

Brush any bees off the location
to get them flying

Collect

Allow to collect

Waiting until dark

Manually collect the Bees if needed (vacuum)



What Are You Leaving?

Bees?

Tools?

Handouts?

Happy People?

More Info - Links

I will provide you host with a copy of these slides and additional links.

Index on Throning -

<https://www.facebook.com/bluegreenhorizons/posts/868464243931278>

BlueGreenHorizons

Failing to plan is a plan for failure!

BlueGreenHorizons

DW



BlueGreenHorizons

Public space swarm relocation

More Control and Less Chaos

A 5 Part Series

Thank you for Inviting Me. We are going to go through the first part of this presentation quickly to assured that we will have lot's of time for questions. I have provided your host with a full copy in PDF form

What I hope to present is our process's for swarm relocations.

We have posted many of our adventures on FB and Youtube and while they are not feature film quaility they do show our systems and process.

BGH is located near Sacramento, California.

I grew up in Oregon around orchards where there were always Bees around.

When I was almost 14 – I asked the Guy in the white suit “ what you doing?” You all know the rest.

BlueGreenHorizons

We performed 100's of recoveries a year.

We are licensed, insured, and have contacts with State, County and City Governments for relocating swarms and feral hives.

*Our main area of interest is feral Bee populations
and researching urban Bee/People conflict*

BGH's purpose and mission.

To research the feral Bee behavior in this special area

To modernize safe public Bee retrieval

To examine urban Bee/ Human conflict
and share our experience with Honey Bees with young
people

Now why do we do so many recoveries?

The Sacramento Valley from North to South has over
50,000 swarms a year. (most likely double that)

BlueGreenHorizons

*Public space
swarm relocation*

*Calm Cut-Outs
Successful Trap-Outs
Post Removal Care
DIY – Tools*

Coming Soon – My Journey with Varroa

This is Part 1 of a series

Part 1 PS Swarms

Part 2 Calm Cut-outs

Part 3 Queens Room Trap Outs

Part 4 Hiving Process for Maximum recovery

Part 5 – DIY Tools (being redone for June 2021)

The logo for BlueGreenHorizons, featuring the text "BlueGreenHorizons" in a green, sans-serif font. The text is centered within a black rectangular box. The background of the slide is a gradient of blue, with a darker blue at the top and bottom, and a lighter blue in the middle. There are also some horizontal lines in the background.

BlueGreenHorizons

*Public space
swarm relocation*

One of the most important skill a Beek can develop.

Reproductive Swarming

- Natural
- Wonderful
- Exciting
- Is what Bee's do
- But !



Bee Lining was my second favorite thing to do when I had “vacation” time as a youth. My little jar and a small amount of honey and I was off. I had located a half of a dozen wild hives as I called them. Not easy as the many Hives in the Orchards filled the area with foraging Bees.

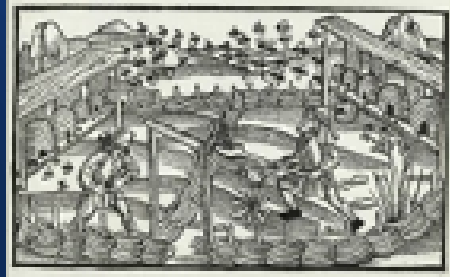
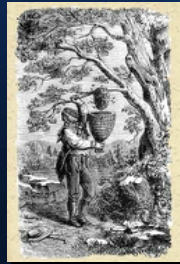
I remember checking a feral tree hive everyday on the way home from school because they were acting strange.

On the only half day that week I was taking my time walking home through the forest around 1pm when I heard the most incredible roar. My first observation of a swarm leaving – I still remember trying to follow them.

It took me two weeks to find their new home. Boy was I hooked.

In the beginning

The first two skills the beekeeper had to master were collecting Honey and catching the swarms & absconding that were the result of that.



Our responsibility

The three most common complaints causing increased regulation of Beekeeping are:

- *Swarming (Just plain scary)*
- *Pool Bees (Needing Water)*
- *Interference with ingress (Someone gets stung)*

Are you prepared?



Scions

Traps

Tools

Be sure to write down the name, address and phone number, including work number of the homeowner or someone who will be on site.

Ask for directions of how to find the swarm location, including where on the property.

Has anything been done to the swarm?

Unfortunately, homeowners sometimes attempt to get rid of the bees themselves before they call a beekeeper.

Often they spray swarms with water in an attempt to get them to leave. This usually has the reverse affect.

.

Always Have a Backup Plan!



“If you can have a plan, have two”

Preparation, Planning and Process

Understand Bee behavior

Understand Your Ability

Take notes even simple notes.

Review rather than remember!

Be prepare for the big things by planning & education.

Be prepared for the little things by resources & experience

Be prepared to FINISH!

Swarms Land Everywhere



Be sure to write down the name, address and phone number, including work number of the homeowner or someone who will be on site.

Ask for directions of how to find the swarm location, including where on the property.

Has anything been done to the swarm?

Unfortunately, homeowners sometimes attempt to get rid of the bees themselves before they call a beekeeper.

Often they spray swarms with water in an attempt to get them to leave. This usually has the reverse affect.

.

Not Swarms



The general public refers to any grouping of bees as a swarm, but in the beekeeping world, only a newly arrived colony meets the criteria for the name.

Questions to Ask about Swarms:

Are they really honey bees? Ask them what the “cluster” looks like.
How long have the bees been there?

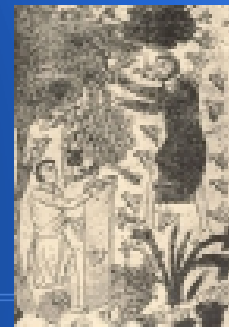
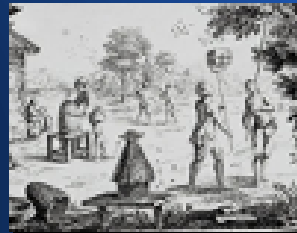
How high off the ground are they? Will you need a ladder?

How big is the swarm (beach ball, football size, etc.)?

Be sure to ask the caller if they are the owner. Get permission from the land-owner/homeowner to collect the swarm from the property.

Communicate back in writing to confirm the request and permission (email – text).

How they did it



Many years ago

History tells of using a set of tools were first used to speed these recoveries.

Scions & Traps

Brood comb on a stick

Baskets (rubbed with bees wax)

& Tanging

Now we -



BGH - start at the Beginning

The **first** thing do was to deeply understand the historical information on swarm collecting (you know before You-tube).

The **second** was to review the currently available tools, materials and processes (you know You-tube)

The **third** was to put them together into a system that fits the Urban environment that we could repeat with confidence.

So upon building some Spreadsheets and Venn diagrams I stated narrowing down the options.

For example while a Frame on the Pole worked great – bees however were often scraped off (including the Queen) as I lowered it through tree branches and moving the frames to a box wasn't very chaos reducing.

A bucket shake was also for the unfamiliar quite an area clearing action.

Now a march was great but hard to raise a awkward nuc or a deep up to a swarm.

High clustered swarms were also very very common making them hard to reach.

As a kid

My old methods did not fully address the Issues in the city.

Reach, Weight, Transportation, Flexibility – needed a single system.



My favorite method in my youth was a pole, a frame of comb and a cardboard box (tape was also very helpful). Part of the reason was that I could carry them on a bike.

As an Adult a 10 frame deep was top of my list.

Both had really good results.

A frame on a pole (portable scion) made it easy easy to reach most swarms in trees and in the country leaving a cardboard box until dark wasn't a big deal.

Not so easy

Urban areas posed many interesting situations and the numbers were through the roof.

- Multiple calls per day
- Crowds of people
- Unique places and situations

When I “retired” I thought I would catch a few swarms in my spare time and give them to non-profit groups, that quickly however wasn't as easy as I thought – well the bees were fine but the situations and numbers were very different.

Urban areas posed many interesting situations and the numbers were through the roof.

Urban

When confronted with gathering several swarms in a single day along with the difficulties of Urban areas we decided to focus on solving those issues.

Bee issues - Quick, easy to use and retrieve as well as secure for transport.

People issues – Fear, public access, safety, - (plus we needed to look calm and professional to project confidence).

The first week in Sacramento I retrieved 4 swarms and neither the frame pole or the buckets were working as smooth as I wanted. Then the second week came and the day after a rain storm I got 4 calls in two hours. After rushing around all day and after dealing with after dark collections – I decided I needed to develop a system that worked for this unique situation.

I greatly under estimated the fear and the excitement of the urbanites – how to balance both of those extremes.

So I decide to make each swarm recovery a class and for that I needed to have a smooth and calm manner. For that I needed to reduce the chaos and have a method that didn't shake bees into a cloud.

Prepare for People

Carry an FAQ or at least a business card .

We also handout Native Pollinator Information as well as a sheet with Links for children and also where to Donate to Local groups.

Our reality is we might have dozens of viewers!

Try your best to return calls to anyone who left voicemails or texts to make sure that they were able to make contact with a bee rescuer. Don't leave people hanging in fear and concern.

Bee the solution so that Bees aren't a problem but just an interesting situation to deal with.

FAQ handouts are a great way to communicate.

Your Safety & Care

Gather Information !

Address any issues or concerns of the property owner before you start.

Are you prepared? Boxes - tools - first aid?

Watch out for others (kids, pets and observers).

Be aware of limbs, traffic and gravity (not to mention the Bees).

They are just Bee's – don't get hurt !

Have them send several pictures so you can gauge the situation correctly.

If the Bees are near property lines have them tell the neighbors what you are doing & when before beginning the relocation.

While bee suits are not required to relocate swarm bees – consider some protection so that the observers don't observe an accident. You always want to be able to finish!

By the way Gravity doesn't care that you are saving Bee's.

The Queen is the Key

The Queen spends over 99.5% of her life between brood comb, in the dark. Only under those conditions does she feel safe & secure – happy ? at least not unhappy!

"When Mom's Happy, Everyone's Happy"

How can we use this condition to our advantage?

So upon carefully going over all the “stuff” about swarm collecting – I decided the Key was biology not force for reducing perceived chaos.

And the Biology of Honey bees put the Queen at the center of that Biology.

Now how can I use that Biology and yet still get some of the benefits of speed that the “force” system have.

Vacation Lake story

Why Do So Much Planning?

- Owner's Personal and Property Safety
- Ease of Access and Reduced Effort
- Keep Time and Travel Costs Down
- Queen Capture
- Yours and the Bee's Safety!

Safety - Safety - Safety

The Gathering

So many ways!

Bag, box or whatever is handy

Move them to you or you to them

Work with Biology – don't fight it

Our system

Settle — (Throne as a scion and/or Tanging)

Place Throne for Walk in -
(Using Poles, Ladders, etc.)

Making it home — (Roof and Protection)

Collecting the Bees — (Time or Vacuum)

Queens Throne



A combination of all the effective techniques of the past with the materials of the Present.

Queens Throne

The Queen's Throne system is a:

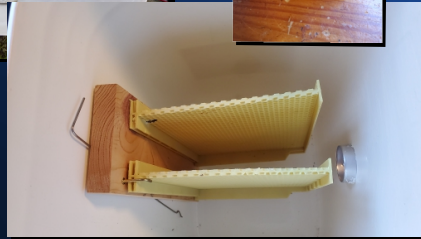
- Scion in a container
- A Nuc box light enough to raise
- A Bait box on a pole
- A Package like container

Cheap and easy to DIY

Queens Throne



Queens Throne

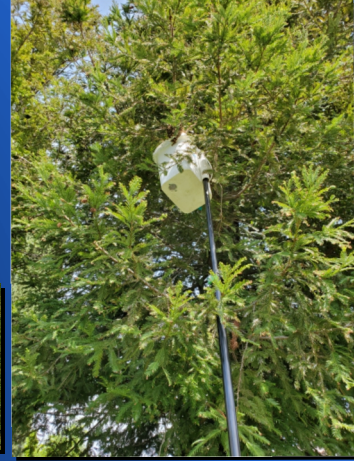


Queens Throne



The lack of chaos in the urban environment is important.

Queens Throne



[Link to DIY](#)

Balance and lightness are critical if you want to go higher than 15 feet.

Really really critical . .

Reach



Place Throne for Walk in



Making it home

Remove from cluster location
(only shake if needed)

Put the Lid and Sun
protection on

Brush any bees off the location
to get them flying

Collect

Allow to collect

Waiting until dark

Manually collect the Bees if needed (vacuum)



What Are You Leaving?

Bees?

Tools?

Handouts?

Happy People?

Explain to them the situation with the remaining Bees.

They should consider keeping pets and small children out of the area for a few days.

Clean up the area and double check for things left behind.

Provide handouts on Bees?

Is there a future Beek in the family – invite them to a club meeting!

Leave a card or note if they are interested in Honey.

Follow up when necessary. Send pic's links etc.

More Info - Links

I will provide you host with a copy of these slides and additional links.

Index on Throning -

<https://www.facebook.com/bluegreenhorizons/posts/868464243931278>

In my

BlueGreenHorizons

Failing to plan is a plan for failure!



Thank you for Inviting Me. We are going to go through some of this presentation quickly but be assured that we will have lot's of time for questions. I have provided your host with a full copy in PDF form

What I hope to present is our process's for relocations.

We have posted many of our adventures on FB and Youtube and while they are not feature film quaility they do show our systems and process.

BGH is located near Sacramento, California.

I grew up in Oregon around orchards where there were always Bees around.

When I was almost 14 – I asked the Guy in the white suit “ what you doing?” You all know the rest.